



Project: \_\_\_\_\_  
 Model: \_\_\_\_\_ Series #: \_\_\_\_\_  
 Dealer: \_\_\_\_\_ Quantity#: \_\_\_\_\_  
 Delivery address: \_\_\_\_\_ Date: \_\_\_\_\_

# Top Mounted Series Reach in Solid door

## Model#WK-48R(Refrigerator)



### Features

- Precision ventilated refrigeration system keeps food at safe temperature
- Electronic control system make it easy to adjust temperature set point and defrost frequency
- Self closing door with 90 degree stay open feature,locks and keys included
- Preinstalled heavy duty casters with brakes
- Top installation board makes it easy to access condenser coil for cleaning and service
- Stainless steel exterior and interior, ensure longer life
- Top LED light,goes on when door open, goes off when door closed
- Anti-corrosion coated copper coil evaporator ensure 10 years life of westlake products
- 6 epoxy coated steel wire shelves, 90 lbs loading capacity each
- R290 hydro carbon refrigerant that has zero(0) ozone depletion potential(ODP) & three(3) global warming potential(GWP)

### WARRANTY:

- 2 Years Parts and Labor
- 6 Years compressor (Additional 4 years parts only)
- westlake is responsible for components failure. but is not responsible for improper operation failure and artificial damage.



Conforms to UL&NSF-7 Standards





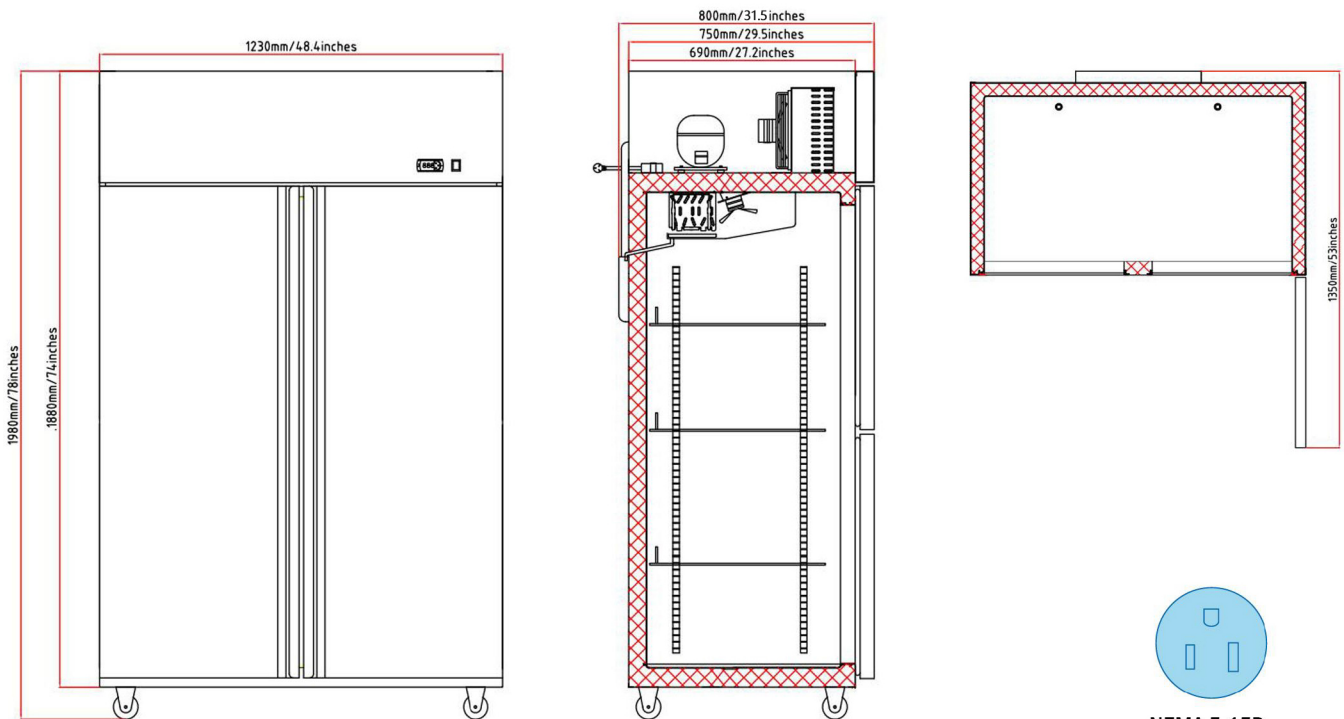
# Top Mounted Series Reach in Solid door

Model# WK-48R(Refrigerator)

## TECHNICAL DATA

|                         |                         |
|-------------------------|-------------------------|
| Model #                 | WK-48R                  |
| Temperature range       | 33~41°F                 |
| Refrigerant             | R290                    |
| Max Ambient Temperature | 100°F                   |
| Defrosting              | automatic every 4 hours |
| Horsepower              | 1/3P                    |
| Exterior Dimension      | 48.4*31.5*78            |
| Interior Dimension      | 43.7*25*55              |
| Gross Weight            | 373lbs                  |
| Net Weight              | 293lbs                  |
| Packing Dimension       | 50*32.3*79.1            |
| Voltage/Phase/Hz        | 115V/1/60Hz             |
| Amps                    | 3                       |
| Plug Type               | NEMA 5-15P              |
| Electrical Cord Length  | 70.8                    |

## PLAN VIEW



NEMA 5-15P